



# Thank you for supporting the University of Oxford

## Single Gifts: every gift makes a difference

If you would rather make a single donation you can do so by cheque, Charity Aid Foundation vouchers or by credit card. All gifts are very gratefully accepted. Single gifts remain the most popular way for Oxford alumni to contribute to the future of their University, their college and the students that are here today.

## Regular Giving: ongoing support for year-round need

Your regular gift provides a much more secure footing to plan ahead for the future and helps to ensure Oxford remains one of the very best places in the world to study, teach and carry out research. You can choose to contribute to the University Annual Fund which benefits the University as a whole, to an individual college, a specific department or Oxford institution such as the Bodleian Library, or another aspect of University life – sports, for example – with which you have a close affinity. With Direct Debits you can make payments when it suits you best: monthly, quarterly or annually.

### Direct Debit Guarantee

- This Guarantee is offered by all Banks and Building Societies that take part in the Direct Debit Scheme. The efficiency and security of the Scheme is monitored and protected by your own Bank or Building Society.
- If the amounts to be paid or the payment dates change, the University of Oxford Development Trust will notify you ten working days in advance of your account being debited or as otherwise agreed.
- If an error is made by the University of Oxford Development Trust or your Bank or Building Society, you are guaranteed a full and immediate refund from your branch of the amount paid.
- You can cancel a Direct Debit at any time by writing to your Bank or Building Society. Please also send a copy of your letter to us.

## Increase the value of your donations with Gift Aid

If you are a UK taxpayer, you can declare that all donations made on or after the date of this declaration should be treated as Gift Aid donations. Doing so maximises your gift because we can reclaim 28p † for every £1 you donate at no further cost to you. If you pay the higher rate of tax, you can reclaim further tax relief on your tax return, currently 20% of the gross donation (an additional 25p for every £1 you donate); or, if you so wish, you can allocate the higher rate tax to your gift. You must pay an amount of Income Tax and/or Capital Gains Tax at least equal to the tax which the Trust Fund reclaims on your donation in the tax year (currently 25p for every £1 you donate). Please consider a Gift Aid donation wherever possible. † 25p from the tax reclaimed and 3p from the transitional relief provided by Government following the fall in basic tax rate from 22% to 20%.

If your declaration covers donations which you may make in the future, please notify the Development Office if you change your name or address whilst the declaration remains in force. You may cancel the declaration by notifying the Development Office. The declaration will then not apply to donations you make on or after the date of cancellation, or such later date as you may specify. If you are unsure whether your donation qualifies for Gift Aid, we will be pleased to advise you. Please contact the Development Office at the address overleaf.

You can see what a difference signing and dating the Gift Aid box can make

*giftaid it*

Your gift each month	Its value after 1 year with Gift Aid	Its value after 5 years with Gift Aid
£15	£230.40	£1,152
£50	£768	£3,840
£100	£1,536	£7,680

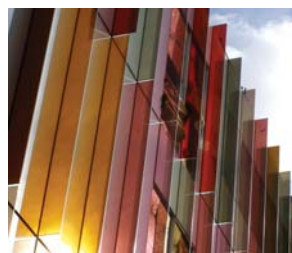
### Data Protection

All data are securely held in the Development Office and will be treated confidentially and with sensitivity for the benefit of the University and its members. The data are available to our international offices, Colleges, faculties, academic and administrative departments, recognised alumni societies, and sports and other clubs associated with the University, and to agents contracted by the University. Data are used for a full range of alumni and development activities. These may include fundraising programmes, which may include an element of direct marketing.

Under the terms of the Data Protection Act you have the right to object to the use of your data for any or all of the above purposes. If you wish to do this or to notify us of an address change, please contact the Development Office at the address overleaf, quoting your Alumni Card Number (if you have one). An online change of details form is also available for alumni at: <http://www.alumni.ox.ac.uk/update.shtml>

### The Charitable Status of Oxford University

The objects of the University of Oxford Development Trust Fund are to promote, assist and secure the advancement of education, learning, teaching, scholarship and research at or in connection with the University of Oxford, its Colleges and societies. The Trust Fund is administered by the University and established for a special purpose in connection with the University. It is therefore an exempt charity for the purpose of charity legislation. As such, it has full charitable status; albeit it is exempt from the requirement to register as a charity with the Charities Commission, and therefore does not have a Charity reference number. The Trust Fund's Inland Revenue reference number is XN80595.



# Oxford Thinking

The Campaign for the University of Oxford

